

Together

We can accomplish much when we work...

PHOENIX HOMESTEAD ASSOCIATION

Neighborhood News and Upcoming Events – Spring Issue 2004

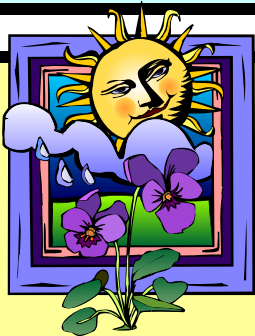
Yearly General Meeting



It's that time of year again!

The Phoenix Homestead Neighborhood Association will be having our yearly meeting on Sunday, April 4th starting at 11:30 a.m. It will be a potluck at the park, located at Flower and 27th Street. We will start with the meeting and elect a new board; then we'll have the potluck! All those interested in being on the board, voting for the board, or are just plain hungry are welcome to take part.

In order to be on the board or to vote for candidates you must be a dues-paying member of the association (dues are \$24.00 a year). A main dish and drinks will be provided. Please bring a side dish or dessert. Also, **bring a chair**. Please come, join in, meet your neighbors, and celebrate life in our beautiful community.



Wisdom of the Hopi Elders Part II

A Hopi elder speaks:

There is a river flowing now very fast. It is so great and swift, that there are those who will be afraid. They will try to hold on to the shore. They will feel they are being torn apart and will suffer greatly. Know the river has its destination. The elders say we must let go of the shore, push off into the middle of the river, keep our eyes open, and our heads above the water. And I say, see who is in there with you and celebrate. At this time in history, we are to take nothing personally.

Least of all, ourselves.

For the moment that we do, our spiritual growth and journey comes to a halt. The time of the lone wolf is over. Gather yourselves! Banish the word struggle from your attitude and your vocabulary. All that we do now must be done in a sacred manner and in celebration.

**WE ARE THE ONES WE'VE BEEN
WAITING FOR.**

Oraibi, Arizona
Hopi Nation

Neighborhood Hospitality!

The Hospitality Committee would like to welcome all of our new neighbors and all new babies. Please call and tell us of any new arrivals to the neighborhood. Our only source of information is your call, so let us know. Call **Melinda McClement** at **602-522-0599**.



**Check Out the
Phoenix Homesteads
Website at:**

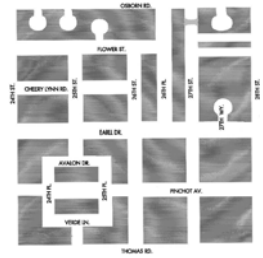
www.phoenixhomesteads.com

Luminaria Celebration Success!!

The 14th Annual Luminaria Celebration, held last December, was a magical event. Over 50 neighbors showed up to lend a helping hand in assembling and distributing 3500 luminarias. We also used this annual celebration to help out our larger community. We collected donations of 53 pounds of food and \$490, which were donated to St. Mary's Food Bank. In a letter thanking our neighborhood, St. Mary's Food Bank reports that our donation will generate 2552 meals for those in need!

I would like to thank everyone who so generously supported this event. A special Thanks goes out to Barb's Bakery for generously donating pastries to feed the volunteers who assembled the luminarias.

Phoenix Homesteads Neighborhood Association 2003 Year in Review



Boundaries

N: Osborn Rd
S: Thomas Rd
E: 28th St
W: 24th St

Partners

- City of Phoenix – BW Grant
- St. Paul's Preparatory Academy
- Barb's Bakery
- Jodeci Quick Mart
- Schreiner's Sausage
- St. Mary's Food Bank

Accomplishments

- Neighborhood of Yard Sales
- Neighborhood Clean-up/Tree Planting
 - Breakfast in the Park
 - Holiday Luminarias
- Distributed 4 Newsletters
- Restarted Hospitality Baskets
- Annual General Meeting/Potluck
- Donated \$490.00 and food to St. Mary's
- Supported Roundabout at Earll & 26th St
 - Created a Annual Plan of Action
- Website is kept current and updated

Key Things We Learned

- It's busy in the Fall
- There's nothing going on in the Summer
- We can't accomplish everything, but it's nice to have a list of activities from which to choose
- Encourage new ideas from community members – follow-up and support

2004: Things We'd Like To See

- Local Directory for Neighbor's Businesses
- Music Festival/Art Fair
- New Activities
- Roundabout Installed
- Events/Activities held on Westside
- More Volunteers

MEMBERSHIP APPLICATION

The Phoenix Homestead Association was created to unify the residents of our neighborhood and to strengthen our community. Our goals are to create a safe and secure environment, to beautify our neighborhood, and to build a shared sense of community. Achieving these goals will benefit all in this area by increasing our property values and improving our living environment. We need your help in achieving these goals.

Membership fees are only **\$24 a year**. These fees help to support neighborhood events, projects, and activities:

- **Neighborhood Clean-up days,**
- **Holiday Luminarias,**
- **and many other projects and events.**
- **Tree plantings,**
- **Community Get-Togethers in the park,**

Please show your support for the neighborhood by becoming a Phoenix Homestead Association member. Make checks out to: **Phoenix Homestead Association**. Mail to: PHA, 3013 N. 27th Street, Phoenix, AZ 85016.

Name: _____

Address: _____

Phone: _____ e-mail: _____

_____ - I am also interested in volunteering some time for neighborhood projects. (check if 'Yes')